

**ES604A**

**Adjustable Self Closing Socket**

Material: Polyethylene Plastic  
 Finish: Natural  
 Rear Socket Depth: 2-3/4"

Moves on ratchets right or left 7/16". Elongated holes for vertical & horizontal adjustment.  
 Screw or staple mounting.  
 For face frame cabinets, attaching cabinet members to cabinet back.

200 Sets/Box



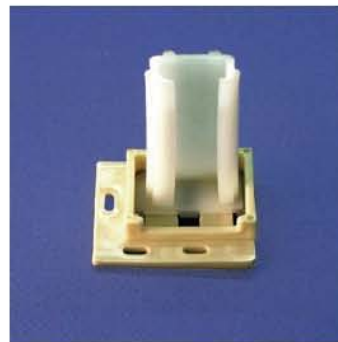
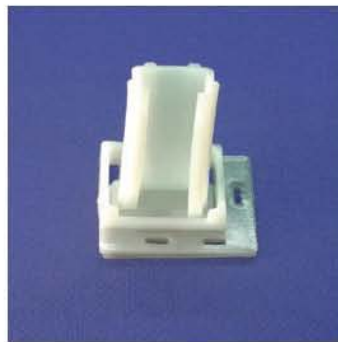
**ES647AL**

**Adjustable Self Closing Socket Left**

Material: Polyethylene Plastic  
 Finish: Natural  
 Rear Socket Depth: 2-1/8"

Moves on ratchets right or left 1/2". Elongated holes for vertical & horizontal adjustment.  
 Screw or staple mounting.  
 For face frame cabinets, attaching cabinet members to cabinet back.

500 Pieces/Box



**ES647AR**

**Adjustable Self Closing Socket Right**

Material: Polyethylene Plastic  
 Finish: Natural & Almond  
 Rear Socket Depth: 2-1/8"

Moves on ratchets right or left 1/2". Elongated holes for vertical & horizontal adjustment.  
 Screw or staple mounting.  
 For face frame cabinets, attaching cabinet members to cabinet back.

500 Pieces/Box

**ES614L**

**Fixed Self Closing Socket Left**

Material: Polyethylene Plastic  
 Finish: Natural  
 Rear Socket Depth: 3-3/16"

Elongated holes for vertical & horizontal adjustment.  
 Screw or staple mounting.  
 For face frame cabinets, attaching cabinet members to cabinet back.

500 Pieces/Box



**ES614R**

**Fixed Self Closing Socket Right**

Material: Polyethylene Plastic  
 Finish: Natural  
 Rear Socket Depth: 3-3/16"

Elongated holes for vertical & horizontal adjustment.  
 Screw or staple mounting.  
 For face frame cabinets, attaching cabinet members to cabinet back.

500 Pieces/Box

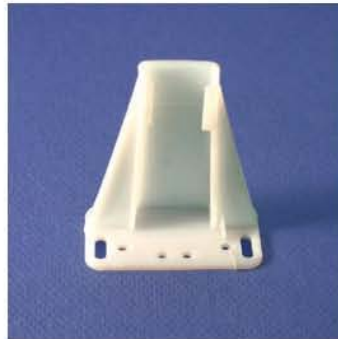
**ESB6402L**

**Fixed Non Self Closing Socket Left**

Material: Polyethylene Plastic  
 Finish: Natural  
 Rear Socket Depth: 2-13/16"

Elongated holes for vertical & horizontal adjustment.  
 Screw or staple mounting.  
 For face frame cabinets, attaching cabinet members to cabinet back.

900 Pieces/Box



**ESB6402R**

**Fixed Non Self Closing Socket Right**

Material: Polyethylene Plastic  
 Finish: Natural  
 Rear Socket Depth: 2-13/16"

Elongated holes for vertical & horizontal adjustment.  
 Screw or staple mounting.  
 For face frame cabinets, attaching cabinet members to cabinet back.

900 Pieces/Box

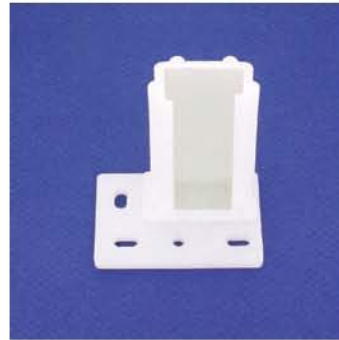
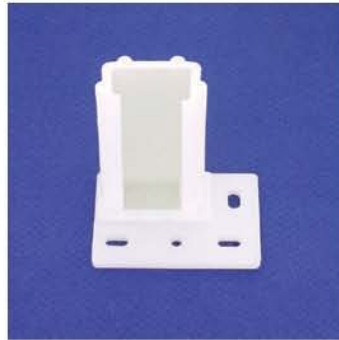
## ES225L

### Fixed Non Self Closing Socket Left

Material: Polyethylene Plastic  
Finish: Natural  
Rear Socket Depth: 2-1/4"

Elongated holes for verticle & horizontal adjustment. Screw or staple mounting. For face frame cabinets, attaching cabinet members to cabinet back.

250 Pieces/Box



## ES225R

### Fixed Non Self Closing Socket Right

Material: Polyethylene Plastic  
Finish: Natural  
Rear Socket Depth: 2-1/4"

Elongated holes for verticle & horizontal adjustment. Screw or staple mounting. For face frame cabinets, attaching cabinet members to cabinet back.

250 Pieces/Box